

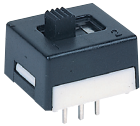
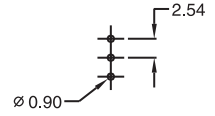
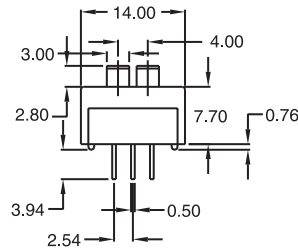
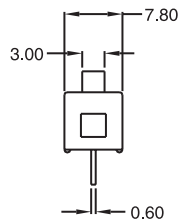
# Slide Switches

## Miniature THT Slide Switches

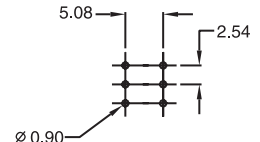
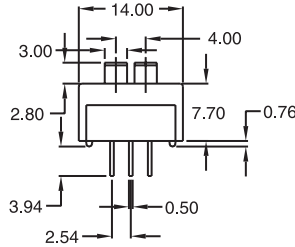
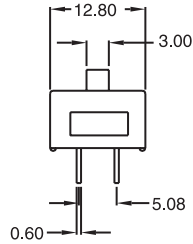
## SB7 Series



SB7SNA2T1

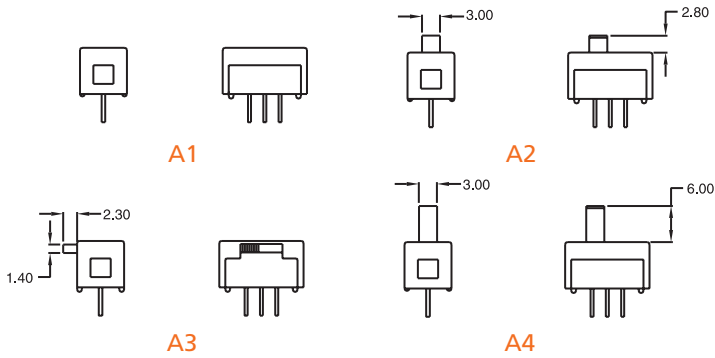


SB7DNA2T2

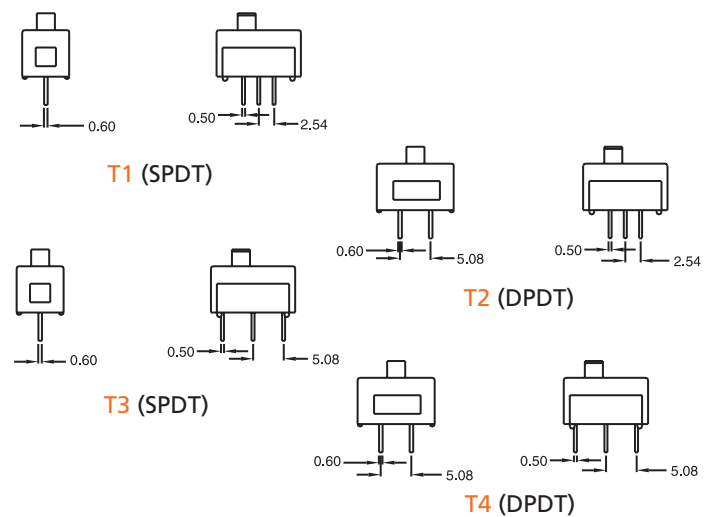


Pushbutton Switches

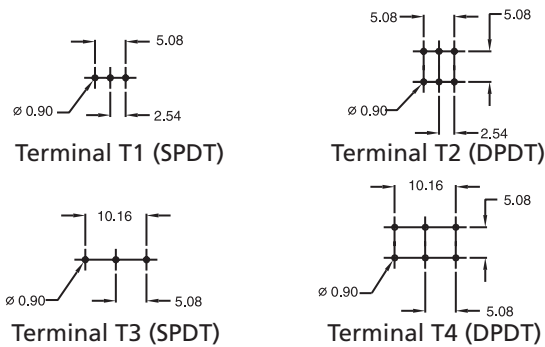
### ACTUATOR OPTIONS



### TERMINAL OPTIONS



### P. C. MOUNTING



### SWITCH FUNCTION

NO. POLES	MODEL NO.	SWITCH FUNCTION			CONNECTED TERMINALS			SCHEMATIC
		POS.1	POS.2	POS.3	POS.1	POS.2	POS.3	
SP	SB7SN	ON	NONE	ON	2-1	OPEN	2-3	
	SB7SF	ON	OFF	ON				
DP	SB7DN	ON	NONE	ON	2-1,5-4	OPEN	2-3,5-6	
	SB7DF	ON	OFF	ON				

MOM=MOMENTARY

## How to order:

SB7

#### 1 SWITCHING & POLES:

- SN SP ON-NONE-om
- SF SP ON-OFF-ON
- DN DP ON-NONE-ON
- DF DP ON-OFF-ON

#### 2 ACTUATOR:

- A1 Flush
- A2 2.80 mm high
- A3 Side
- A4 6.00 mm high

#### 3 TERMINALS:

- T1 SPDT - PC thru-hole
- T2 DPDT - PC thru-hole
- T3 SPDT - PC thru-hole
- T4 DPDT - PV thru-hole

#### 4 CONTACT MATERIAL:

- AG Silver
- AU Gold
- UT Gold, tin-lead
- GT Silver, tin-lead
- UG Gold over silver
- UGT Gold over silver, tin-lead

#### 5 SEAL:

- E Epoxy (Standard)

#### 6 ROHS & LEAD FREE:

- blank RoHS compliant
- V RoHS & lead free

## General Specifications:

#### MATERIALS

- » Movable Contact & Fixed Terminals:
  - AG, GT, UG & UGT: Silver plated over copper alloy
  - AU & UT: Gold over nickel plated over copper alloy

#### MECHANICAL

- » Operating Temperature: -40°C to +85°C
- » Mechanical Life: 20,000 cycles at full load

#### CONTACT RATING

- » AG, GT, UG & UGT: 3A 120VAC/28VDC  
1A 250VAC
- » AU & UT: 0.4VA max. 20V max. (AC/DC)

#### ELECTRICAL

- » Contact Resistance: 50mΩ max. initial
- » Insulation Resistance: 1,000MΩ min.